



DESTROYER SERIES
JK JEEP
ARMOR STEPS

**INSTALLATION
INSTRUCTIONS**

*PLEASE READ THROUGH THE INSTRUCTIONS BEFORE BEGINNING ANY PART OF THE
INSTALLATION PROCESS*

**FOR OFFROAD USE ONLY, WE ARE NOT RESPONSIBLE FOR DAMAGE CAUSED BY
IMPROPER INSTALLS OR USE OF OUR PRODUCTS**

WEB INSTALL LINK:

<http://lodoffroad.com/assets/pdfs/JRS0712Install.pdf>

1.



Before installing the new steps, we must remove the old ones. To remove either the Jeep JK Wrangler Unlimited Rubicon rocker guards or Sahara running boards, use a 10mm wrench to remove the 3 pairs of nuts securing them to the body pinch seam.

2.



Using a 13mm socket, remove the three (3) bolts securing the Rubicon rocker guards or Sahara running boards to your JK Jeep Wrangler's body.

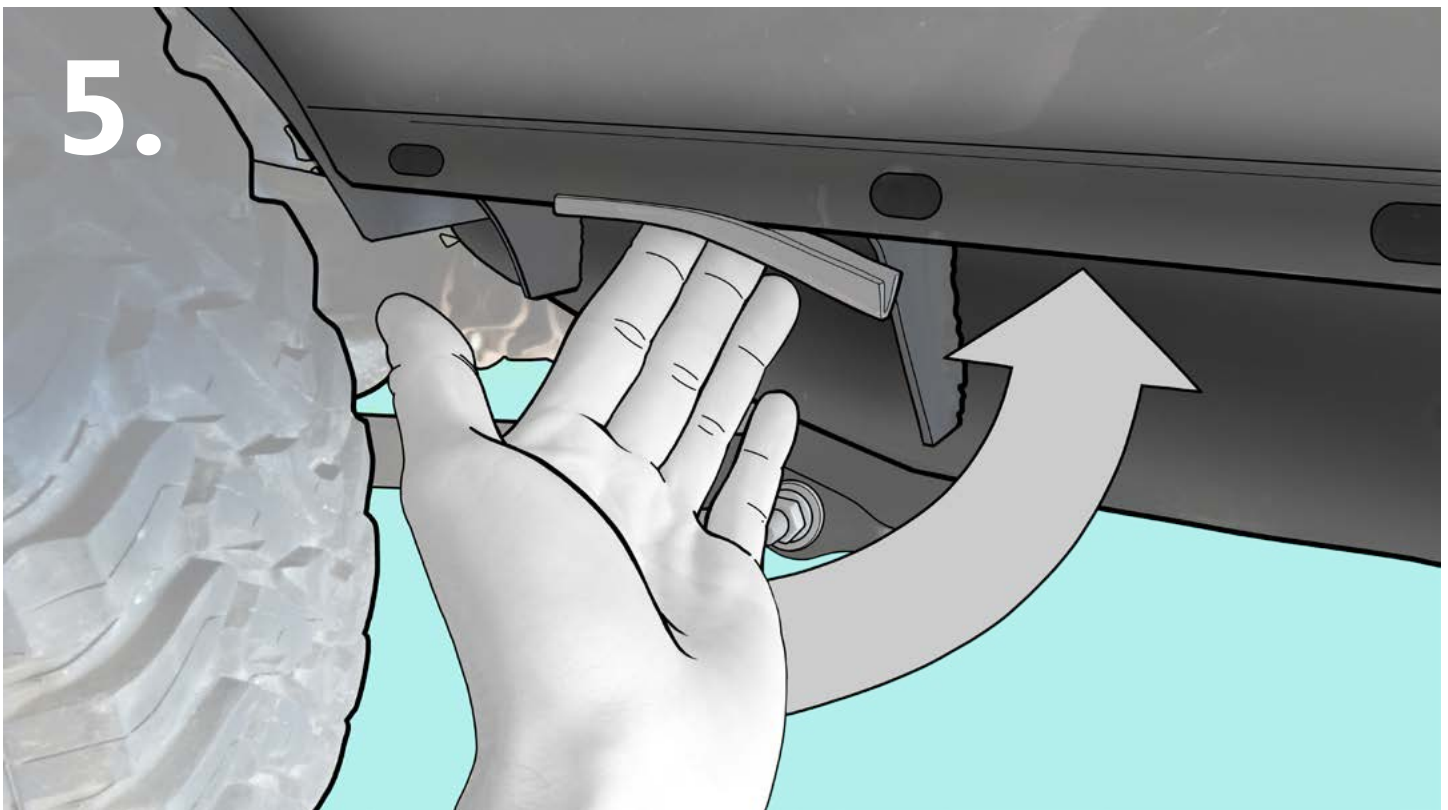
3.



With the six (6) nuts and three (3) bolts removed, the factory running boards or rocker guards will pull right off the body pinch seam. Carefully set them aside.



Grab an **18mm** socket and breaker bar, and remove the three bolts from the three big pucks that hold the body to the frame.



Before installing the step, add the rubber lining strips (included) to the pinch seam directly across from the mount pucks as shown here. The front one may be slightly offset due to the angled mount.

6.

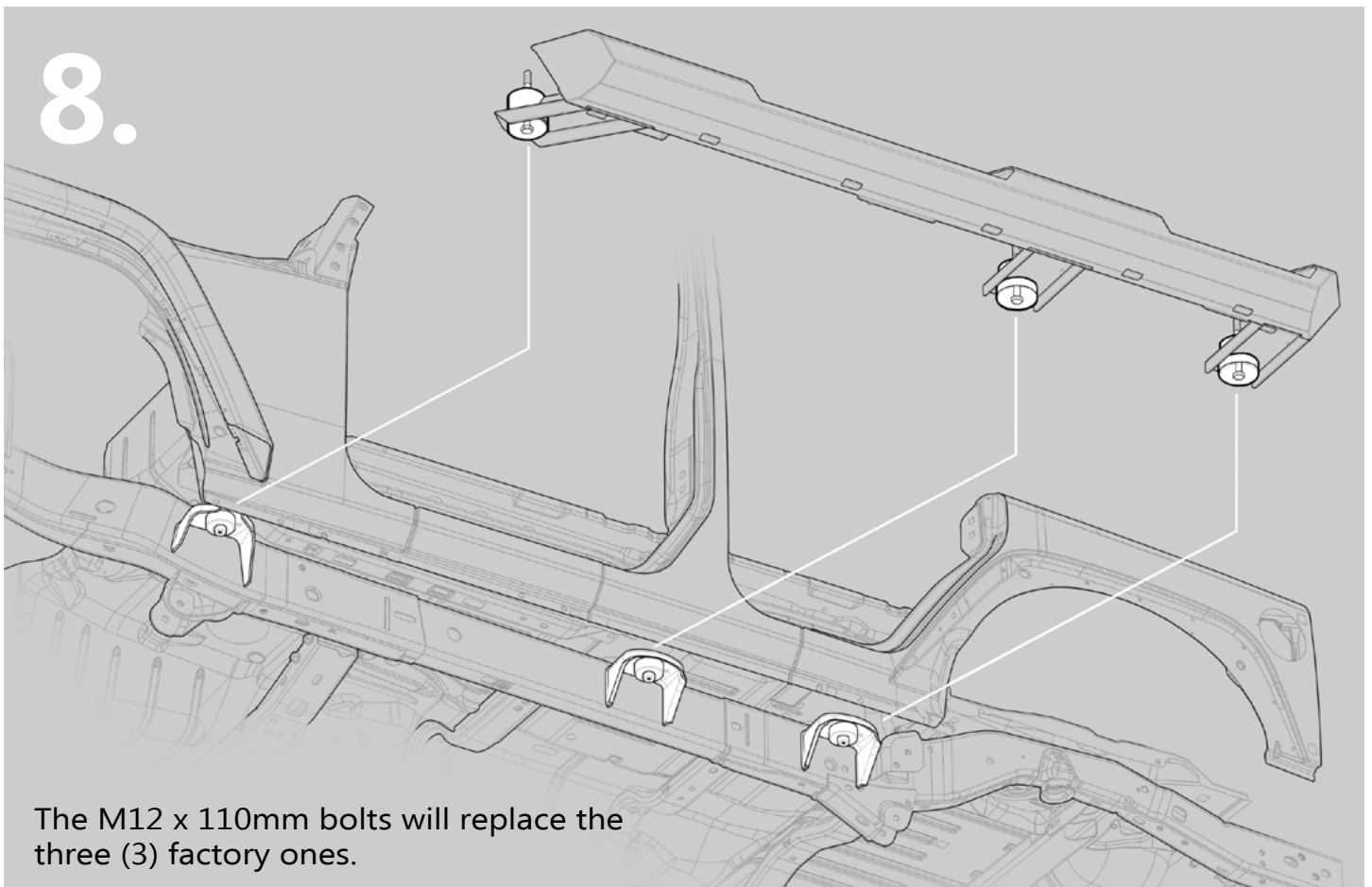


THE KIT INCLUDES BOTH 5/16" AND 1/4" BOLTS FOR THE MARKED HOLES.

IF YOU PREFER TO USE ONLY 5/16", YOU MAY NEED TO ENLARGE SOME OF THE HOLES.

(OPTIONAL)

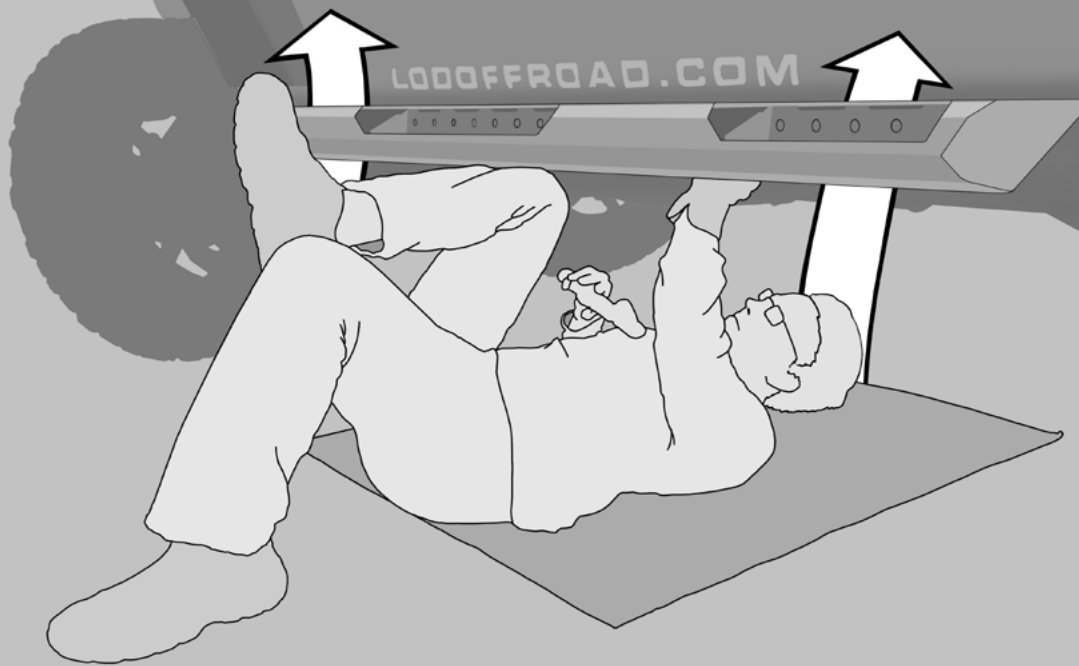
8.



The M12 x 110mm bolts will replace the three (3) factory ones.

9.

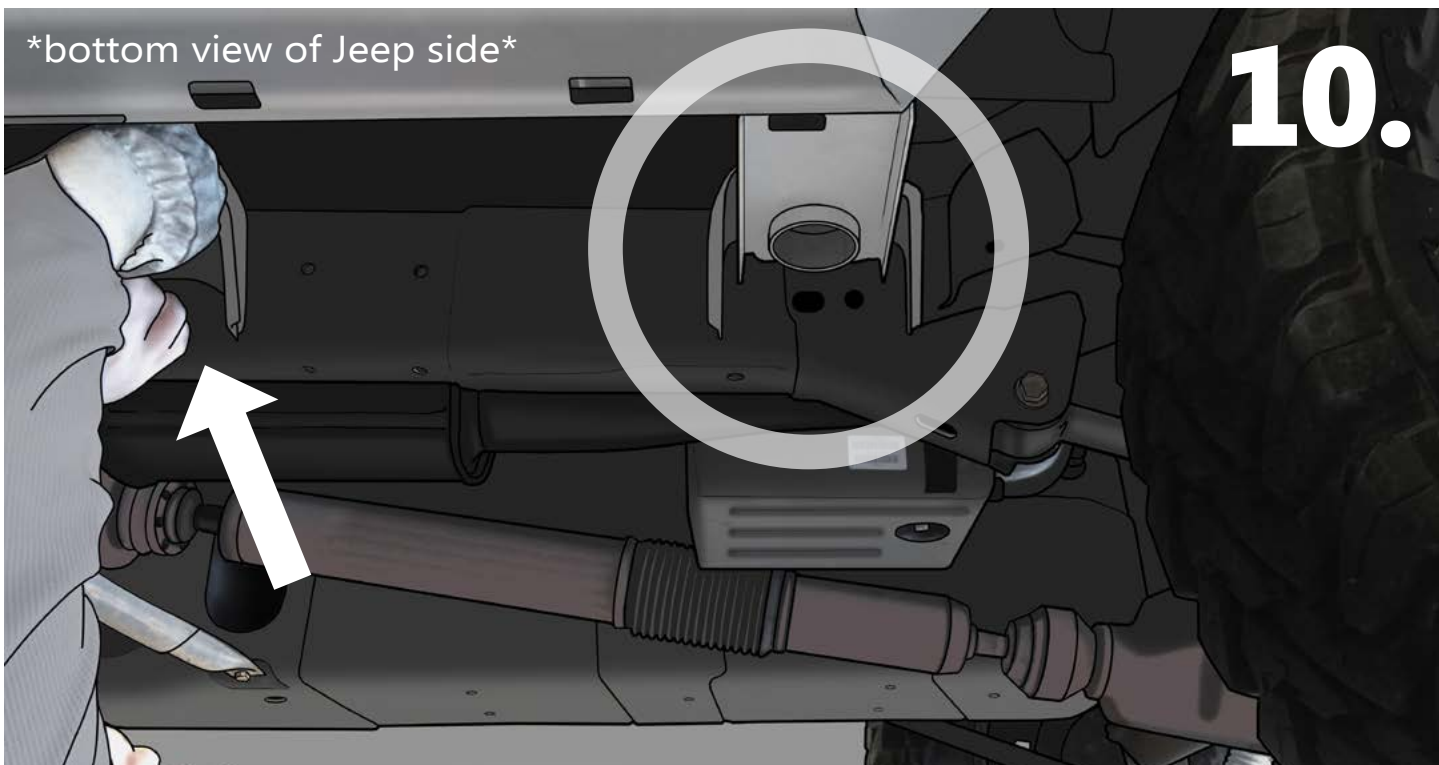
Lift the step so the three mounts line up with the three body tub mounts. You can use your knee and arm to hold it up while you thread in the bolts.



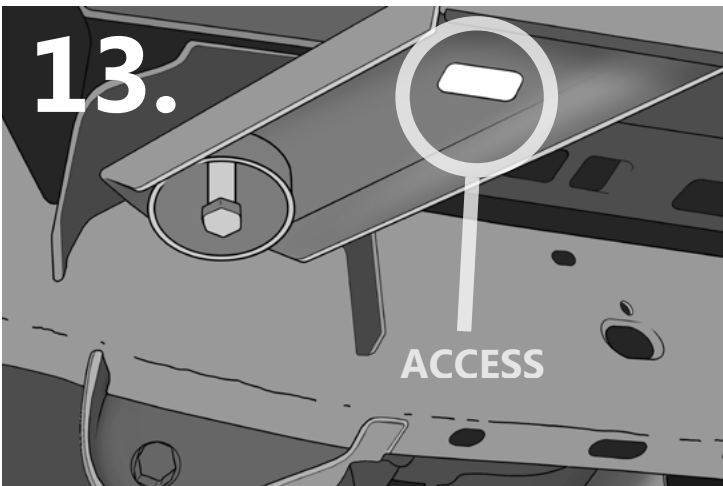
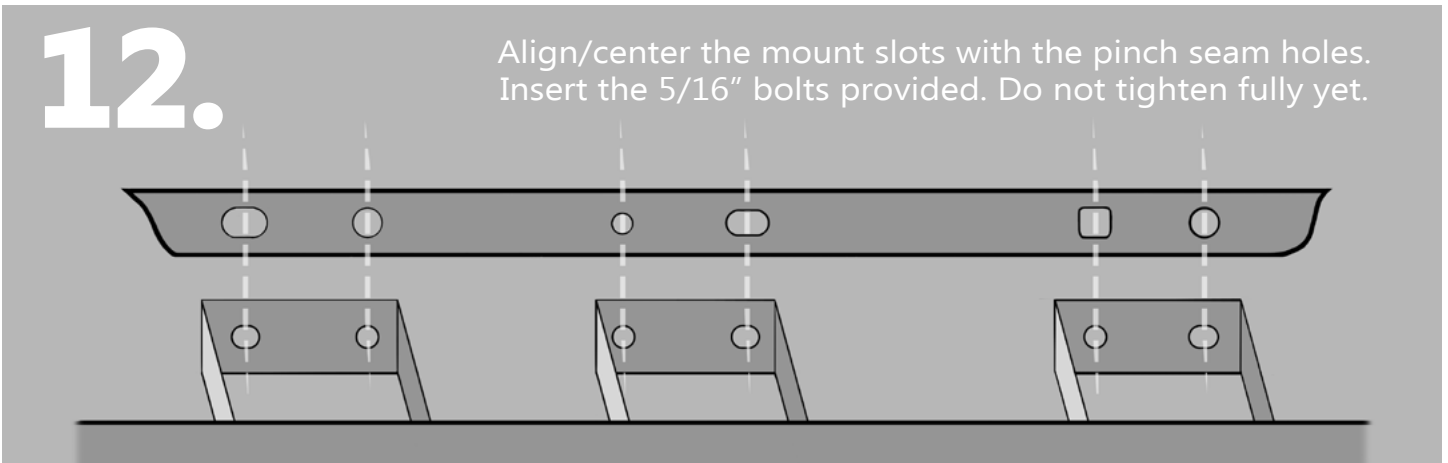
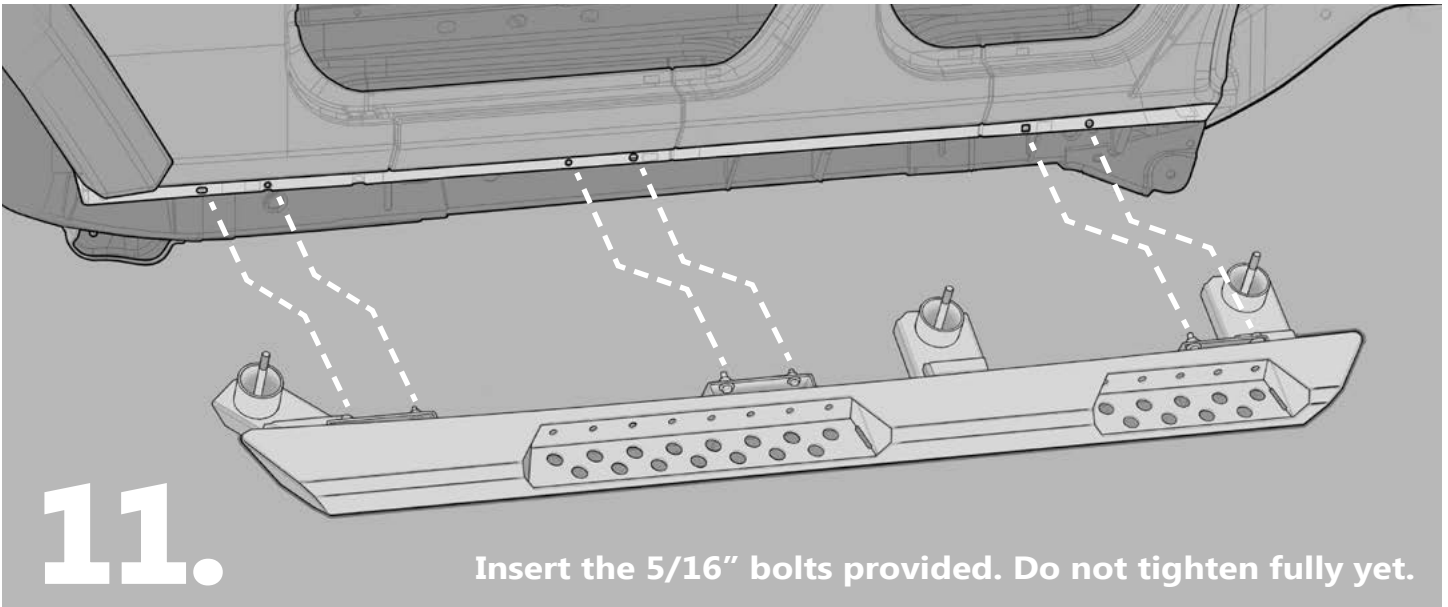
IMPORTANT: If you find that you cannot get the replacement bolt to thread into the hole, see the troubleshooting section at the back of this booklet.

bottom view of Jeep side

10.



After the center mount (shown with an arrow) do the front, then the rear (circled here) mounts next. Leave the bolts **SLIGHTLY** loose for adjustments.



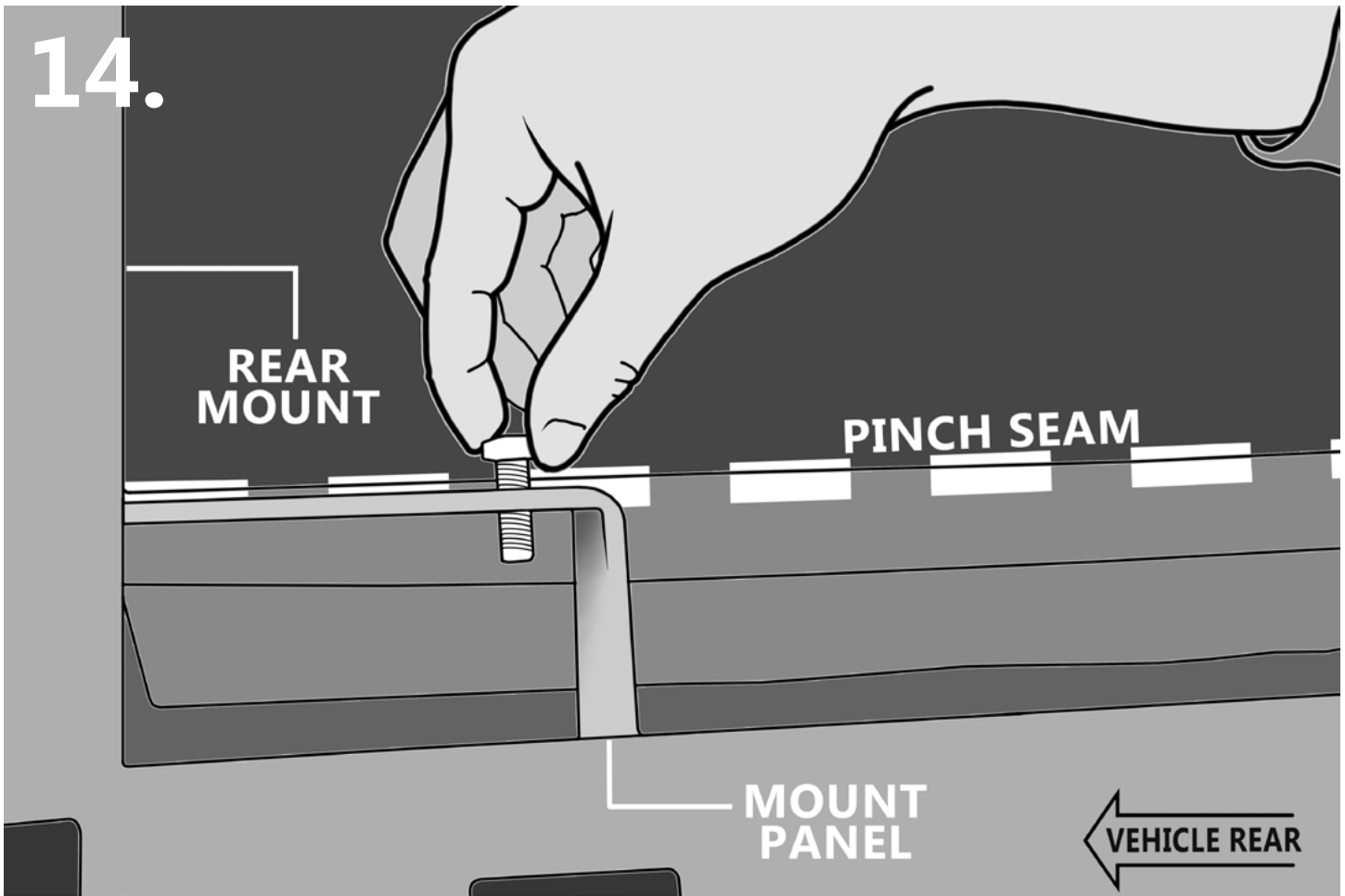
FRONT ANGLED MOUNT



REAR STRAIGHT MOUNT

There are access holes in the mounts, use these to stick a wrench and nut through when tightening the pinch seam mount locations.

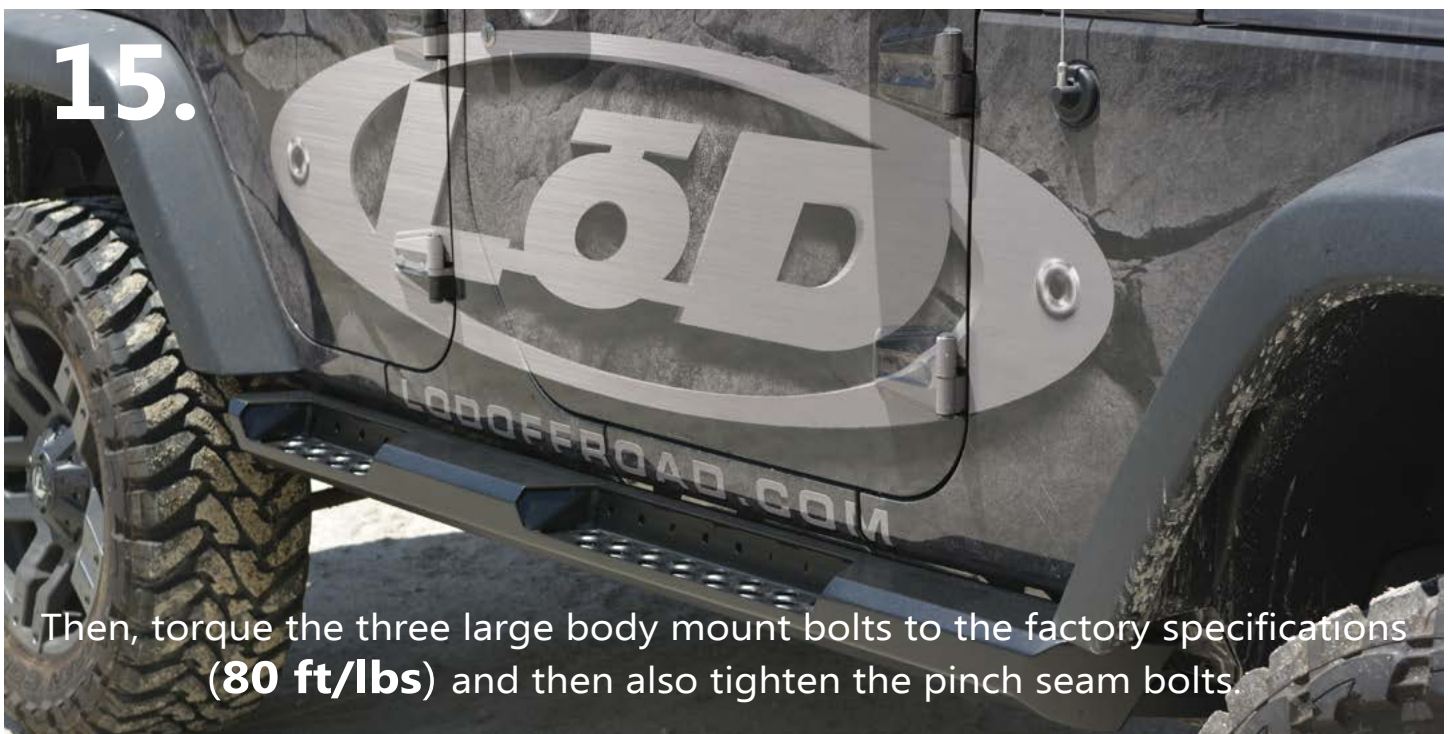
14.



Insert the bolts with the bolt head facing away from the sliders, this way you can stick a wrench into the access hole to tighten the nuts.

Keep the gap between the mount panel and pinch seam minimal.

15.



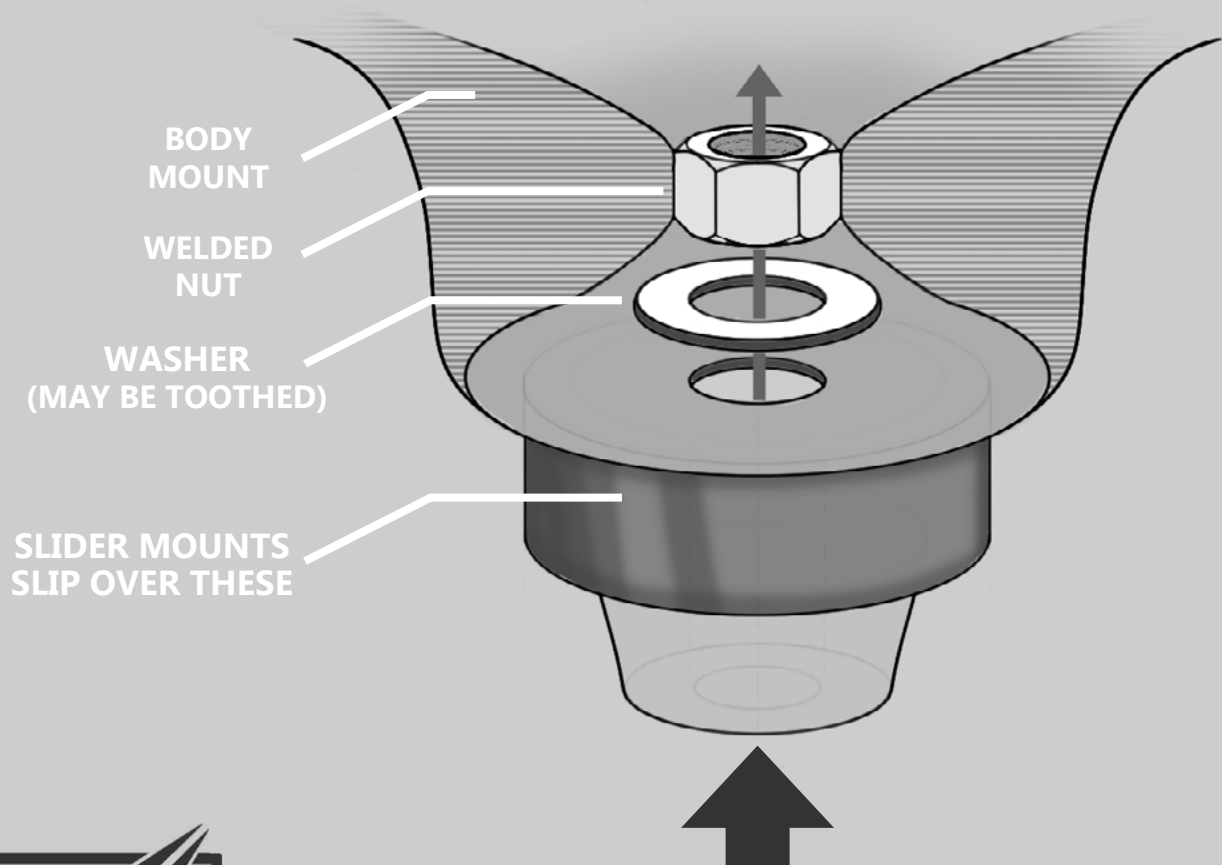
Then, torque the three large body mount bolts to the factory specifications (**80 ft/lbs**) and then also tighten the pinch seam bolts.

That's it! Your new Destroyer JK Slider install is now complete!



TROUBLESHOOTING

The three large tub mounts have a thin washer inside, before the welded nut. It may slip out of place and prevent bolt entry.

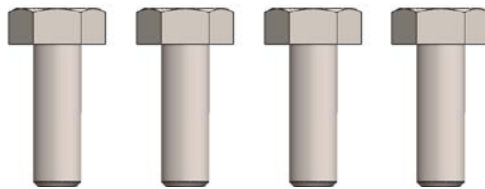


You will need to use a hooked tool or a pair of long pliers to pull the washer out through this opening.



**JK Jeep
Destroyer Series**
Rock Sliders
Hardware + Ship Sheet
Packaged by:

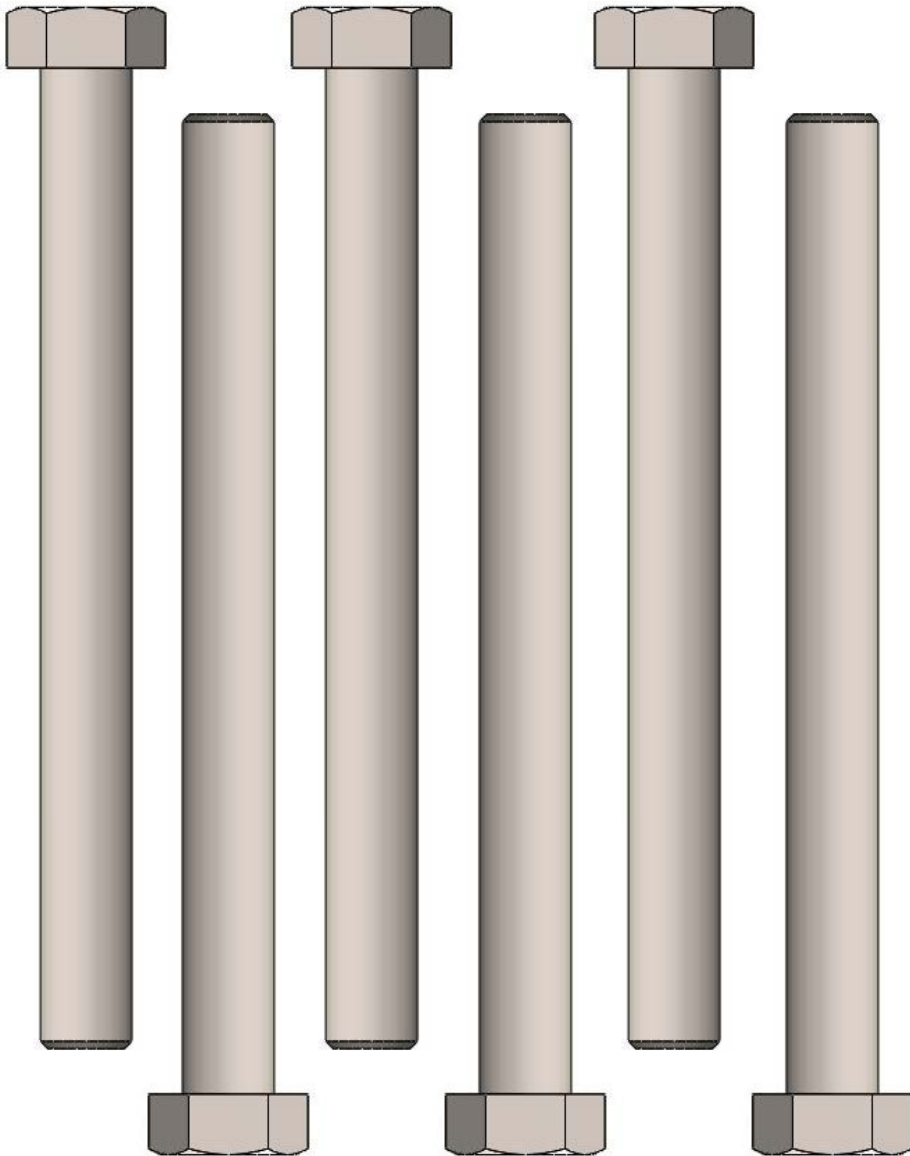
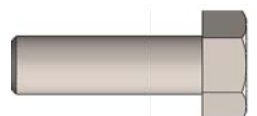
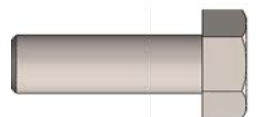
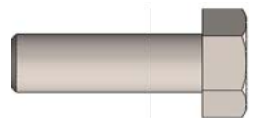
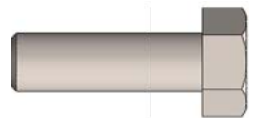
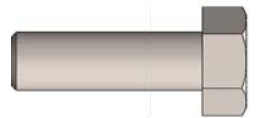
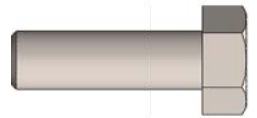
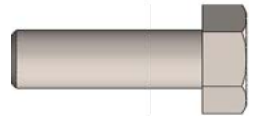
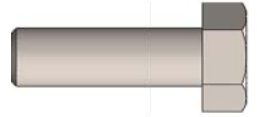
On:

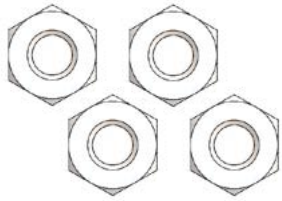


**1/4" (20) x 1
Hex Bolt
(x 4)**

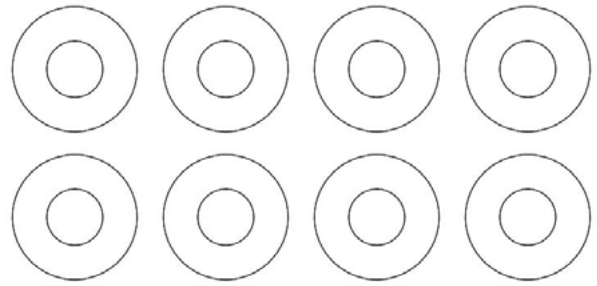
**M12 x 110mm
Hex Bolt
(x 6)**

**5/16" (18) x 1
Hex Bolt
(x 8)**

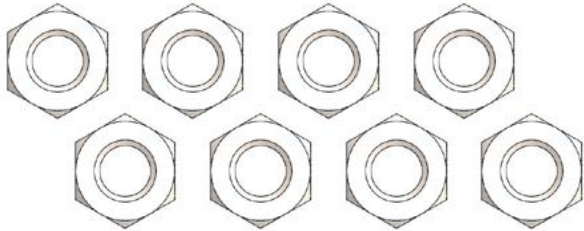




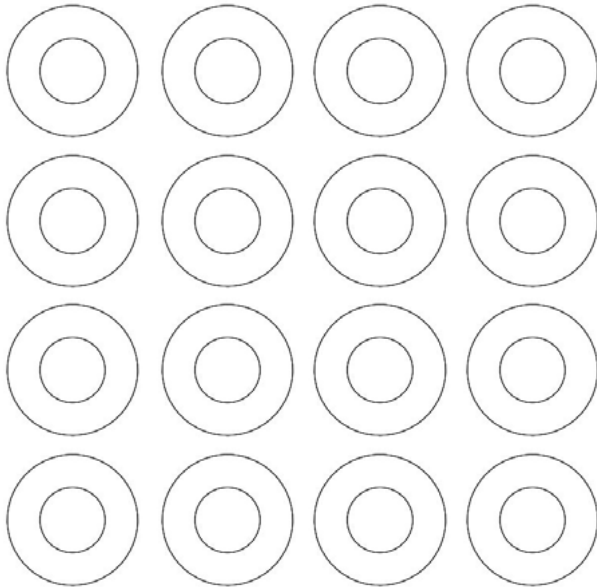
**1/4" (20) Hex
Nut
(x 4)**



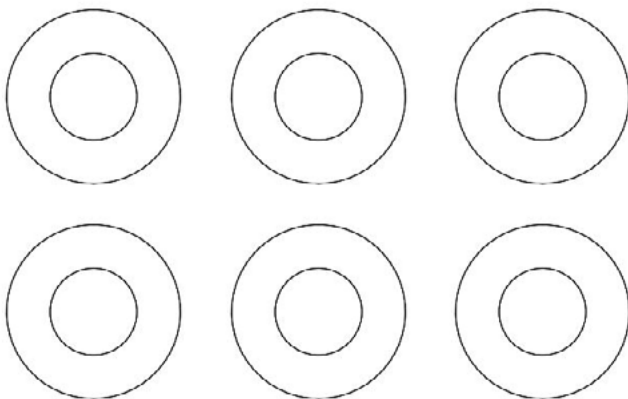
**1/4" Flat
Washers
(x 8)**



**5/16" (18) Hex
Nut
(x 8)**



**5/16" Flat
Washers
(x 16)**



**7/16" Flat
Washers
(x6)**

4 3 2 1

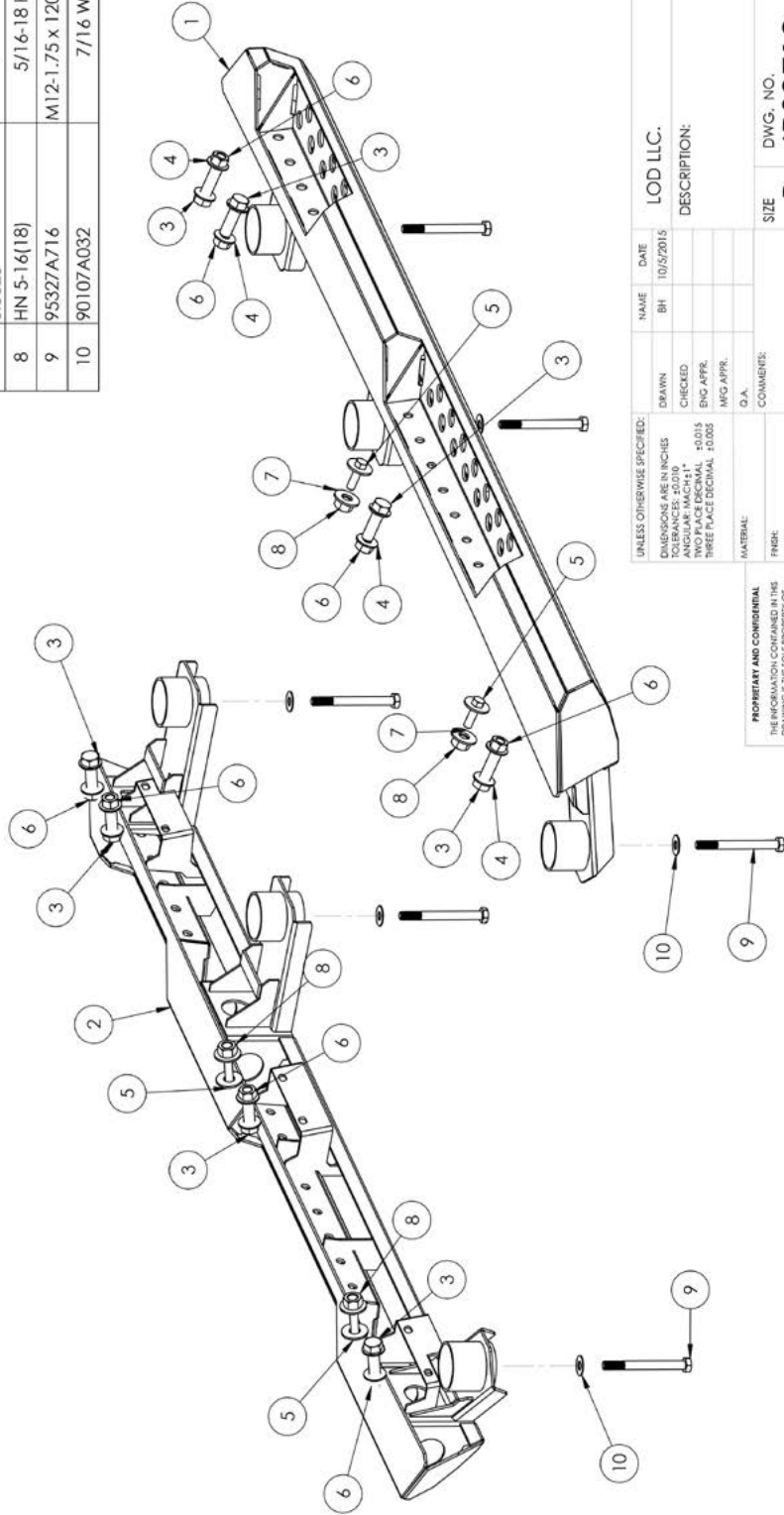
Destroyer Rock Sliders
Part # JRS0712

Fabricated Parts

ITEM NO.	PART NUMBER	DESCRIPTION	QTY.
1	4JRS0712-10D	Destroyer Slider Driveside	1
2	4JRS0712-10P	Destroyer Slider Pass. side	1

Hardware Kit

ITEM NO.	PART NUMBER	DESCRIPTION	QTY.
3	FW 1-4	1/4" Washer	8
4	HB 1-4(20) x 1"	1/4-20 Hex Bolt	4
5	HB 1/4(20)	1/4-20 Hex Nut	4
6	FW 5-16	5/16" Washer	16
7	Preferred Wide FW 0.5625	5/16-18 Hex Bolt	8
8	HN 5-16(18)	5/16-18 Hex Nut	8
9	95327A/16	M12-1.75 x 120mm Hex Bolt	6
10	90107A032	7/16 Washer	6



UNLESS OTHERWISE SPECIFIED:
 DIMENSIONS ARE IN INCHES
 TOLERANCES: ±0.010
 ANGULAR: MACH 1°
 FINISH: AS SUPPLIED
 THREADS: PER ANSI B1.13-1
 THREE PLACE DECIMAL ±0.003

NAME	DATE
BH	10/05/2015

LOD LLC.
 DESCRIPTION:

PROPRIETARY AND CONFIDENTIAL
 THE INFORMATION CONTAINED IN THIS DRAWING IS THE SOLE PROPERTY OF LOD LLC. IT IS TO BE KEPT CONFIDENTIAL AND NOT REPRODUCED OR TRANSMITTED IN ANY FORM OR BY ANY MEANS, ELECTRONIC OR MECHANICAL, INCLUDING PHOTOCOPYING, RECORDING, OR BY ANY INFORMATION STORAGE AND RETRIEVAL SYSTEM, WITHOUT THE WRITTEN PERMISSION OF LOD LLC IS PROHIBITED.

MATERIAL:
 FINISH:
 NOTE:

SCALE: 1:12

SIZE **B** DWG. NO. **JRS0712**

REV

WEIGHT: 1

SHEET 1 OF 13