



HAND THROTTLE CONTROL KIT

www.TERAFLEX.com

#4870400

#8470402



Important Notes:

Prior to beginning this or any installation read these instructions to familiarize yourself with the required steps and evaluate if you are experienced and capable to personally perform these modifications. A factory service manual should be used in conjunction with these installation instructions.

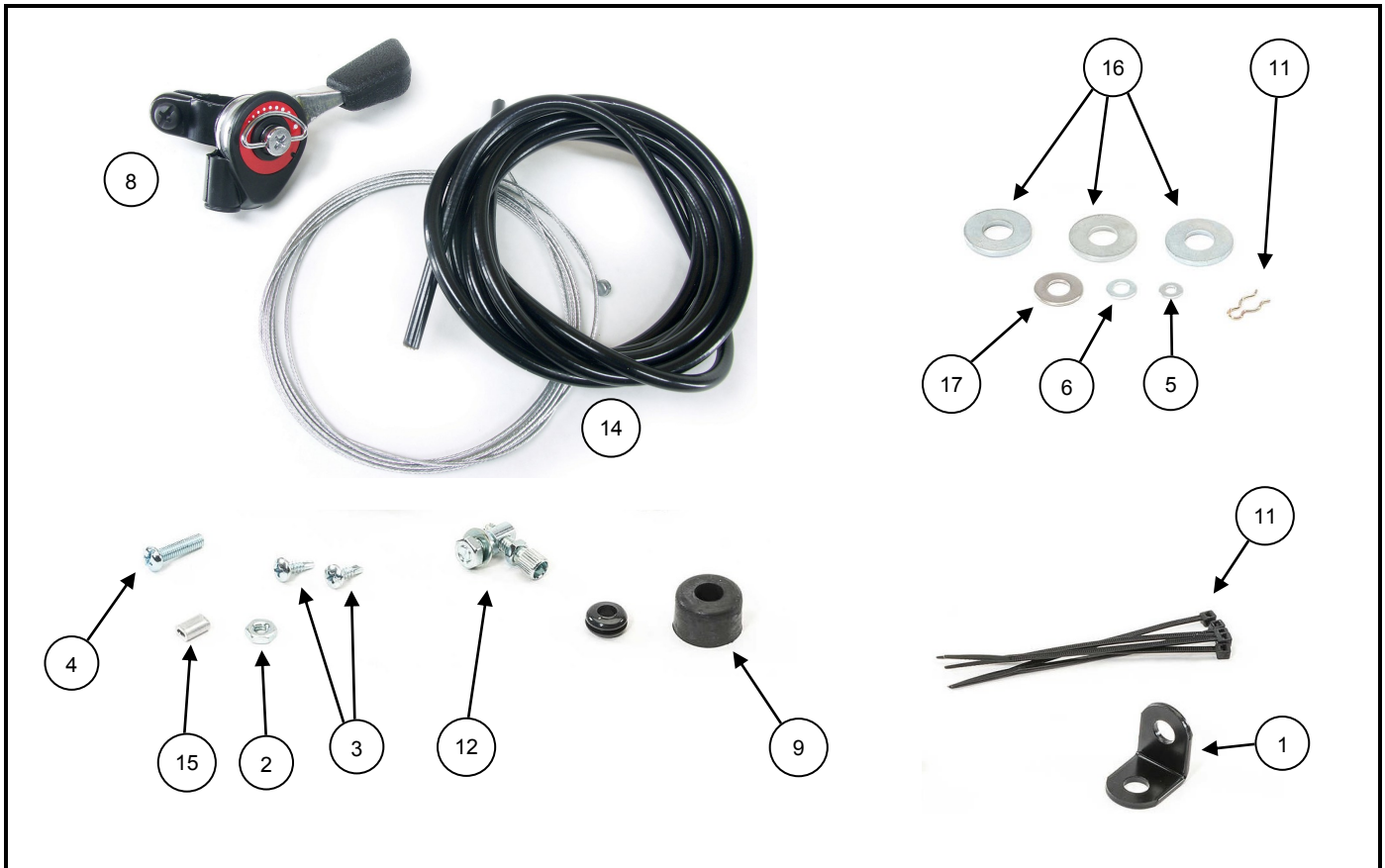
Refer to the parts list to ensure that all necessary components and hardware has been included. If any parts are missing please contact your local TeraFlex dealer for assistance.

This hand throttle is designed for a manual transmission and is for OFF ROAD USE ONLY.

Any components that you add to your vehicle for off road use will cause it to handle differently, both on and offroad. We recommend that caution be used when you use these components off-road, as serious injury or death to the driver and/or passengers may occur if misused. These instructions show installation in a wrangler.

Tools needed:

- Basic Mechanic's Tool Set
- Drill



Item Number	Part Number	Description	Quantity
1	TFTC-13	TFTC-13 "L" Bracket	1
2	TFTC-6	TFTC-6 Hex Nut	1
3	TFTC-7	TFTC-7 Tapping Screw	2
4	TFTC-2	TFTC-2 Screw	1
5	TFTC-4	TFTC-4 Washer	1
6	TFTC-11	TFTC-11 Washer	1
7	TFTC-5	TFTC-5 Washer	1
8	TFTC-17	TFTC-17 Thumb lever	1
9	TFTC-12	TFTC-12 Seat	1
10	TFTC-1	TFTC-1 Cable Stopper	1
11	TFTC-8	TFTC-8 "8" cable chip	1
12	TFTC-16	TFTC-16 Outer casting	1
13	TFTC-14	TFTC-14 Cable tie	5
14	TFTC-15	TFTC-15 Cable	1
15	TFTC-10	TFTC-10 Quick clamp	1
16		5/16 flat washers	3
17	89	flat washer	1

First, begin by removing the shifter knob from shifter lever.



1

You want to slide the rubber bushing over the shift lever for a tight fit. (You might need to ream the bushing out with a drill to fit over your shift lever, but do not remove too much material, or you won't get a tight fit.)



2

Attach the thumb lever to the rubber bushing.



3

Reinstall the shifter knob.



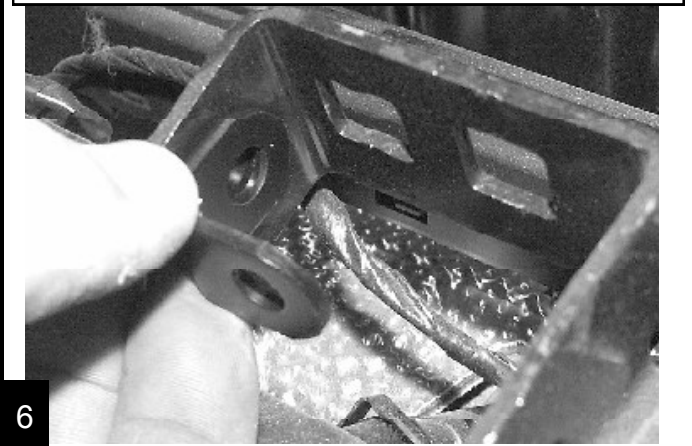
4

Now locate the engine bracket (under your hood) that lies just in front of the air intake tube where your throttle return spring is attached. You'll want to drill a hole into this engine bracket so you can mount the "L" Bracket here along with the cable adjuster.



5

Mount the "L" Bracket and cable adjuster in such a way that it will pull the throttle linkage in the same direction as your accelerator pedal does.



6

Take the end of the cable and run it through the top of the thumb lever down through the shift boot then through the center console.



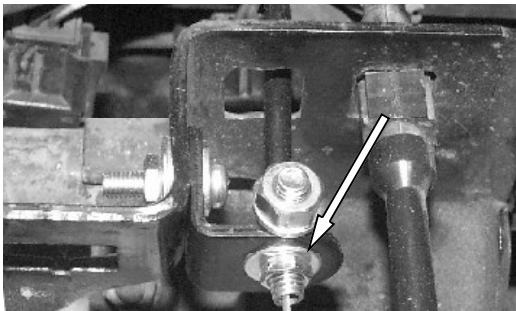
7

Next, locate the rubber grommet under the driver side dash on the firewall. Drill a small hole here big enough for the cable to fit through and pull the remaining end of the cable through to your engine.



8

Run the cable as direct as possible to the throttle linkage from the firewall through the hollow screw you had assembled onto the "L" shaped bracket earlier. Install the cable housing onto the cable and into the head of the hollow screw. Note: You may need 2-3 5/16 flat washers so you can tighten down the nut shown in the picture below. Leave any excess cable to be trimmed at the end.



9

Mount the cable to the throttle linkage by wrapping the cable around the pin and then crimp the cable with the aluminum quick clamp. The "8" clip is then used to retain the cable. Trim the excess length of cable.



10

After installation, check the operation of the accelerator pedal and the hand throttle. Do this with the emergency brake on and the transmission in neutral, so as to avoid injury.

Note: If you have cruise control, drill 1/4" hole as shown below and mount the hollow screw with #89 washer and nut for cable to run directly to the throttle arm.



10

TERAFLEX

PRODUCT INFORMATION

MAINTENANCE INFORMATION:

It is the buyer's responsibility to have all suspension, drivetrain, steering, and other components checked for proper tightness and torque after the first 100 miles and every 3000 miles after that.

NOTICE TO INSTALLER:

The enclosed "Warning to Driver" sticker must be installed in the vehicle in driver's view. This sticker is to act as a constant safety reminder when operating the vehicle. It is your responsibility as the equipment installer to install the provided sticker and to forward the product instructions to the vehicle's owner for review. If a "Warning to Driver" sticker or product installation guide were not included in the kit, FREE replacement stickers and instructions are available by request. It is the installer's duty to ensure a safe and controllable vehicle after the modifications have been performed.

WARNING:

Neither the seller nor the manufacturer will be liable for any loss, damage, or injury directly or indirectly arising from the use of or inability to determine the use of these products. Before using, the user shall determine the suitability of the products for its intended use, and the user shall assume all responsibility and risk in connection therewith.

WARNING TO DRIVER:

This vehicle has been modified to enhance off road performance and has unique handling characteristics. Use in harsh environments can cause extreme stress on the components. Vehicle should be inspected after being off road to make sure that all the components are in working order and safe to travel on the highway. All fasteners should be checked so that they are at the correct torque specifications as the vibration and stresses from off roading may cause critical fasteners to work loose. Extra care should be taken to inspect the critical components, steering, and brake systems. During each oil change components such as arms, tie rod ends, etc should be greased and checked for excessive wear. Any worn components should be replaced. When returning to the pavement always set or restore tire air pressure to the factory recommendation and connect or engage any disabled sway bar mechanisms. Because of the higher center of gravity and larger tires, this vehicle handles and reacts differently than many passenger cars, both on and off road. You must drive it safely! Extreme care should be taken to prevent vehicle rollover or loss of control, which can result in serious injury or death. Avoid sudden sharp turns or abrupt maneuvers. Generally, braking performance and capabilities are decreased when significantly larger/heavier tires are used, especially when used in combination with transfer case low-range reduction kits. Take this into consideration while driving. Do not add, alter or fabricate any factory or aftermarket parts to increase vehicle height over the intended height of the TeraFlex product purchased. Mixing component brand is not recommended. TeraFlex Inc. will not be responsible for any altered product or any improper installation or use of our products. We will be happy to answer any questions concerning the design, function, and correct use of our products. It is ultimately the buyer's responsibility to have all bolts/nuts checked for tightness after the first 100 miles and then every 3000 miles. Wheel alignment, steering system, suspension and drive line systems must be inspected by a qualified professional mechanic at least every 3000 miles.

TERAFLEX PRODUCT WARRANTY:

TeraFlex Inc. warrants TeraFlex Suspension products to the original retail purchaser to be free of defects in material and workmanship for as long as the original purchaser owns the vehicle on which products were originally installed.

Failure to complete regular maintenance (grease every 3000 miles) on TeraFlex FlexArms will void this warranty. All other conditions of the standard TeraFlex product warranty apply.

All TeraLow products are covered by the TeraFlex two (2) year warranty to be free of defects in material and workmanship for two years from date purchased.

TeraFlex axles are covered by a 12-month warranty to be free of defects in materials and workmanship.

This warranty does not cover or include product finish, improperly installed or applied products, improperly maintained products, products or components used for racing or competition or damage due to abuse or neglect, products that fail due to the use of larger tire and wheel combinations.

All returns must be accompanied by an original invoice. It is the customer's responsibility to remove the product from the vehicle. Shipping charges are the responsibility of the customer. TeraFlex Inc. will pay the return freight if the product meets the terms of warranty.

This warranty is for the replacement or repair of defective TeraFlex products only and does not include freight charges, labor charges for removal of or installation of TeraFlex or related products or components, costs incurred due to down time of the vehicle, or lost profits due to vehicle down time.

A returned goods authorization number (RGA#) must accompany any returned products. For more information please contact a TeraFlex customer service representative.

COPYRIGHT

©Copyright 2014. All rights reserved, TeraFlex Inc. Reproduction of this catalog and/or any of its contents without written permission is strictly prohibited.

TeraFlex® is a registered trademark of TeraFlex Inc. All trade names and logos including but not limited to TeraFlex, FlexArms, RockGuard, Monster, and LCG are protected by law and duplication of trade names and/or logos are strictly prohibited.

TeraFlex Inc. reserves the right to update, discontinue, redesign, modify finish, part number or component build parts if deemed necessary without written notice.

TeraFlex Inc., and any associated dealers are not responsible for misprints or typographical errors that may have inadvertently been made within this instruction sheet.

TERAFLEX, Inc.

5680 West Dannon Way
West Jordan, Utah 84081
Phone/801.713.3314
Fax/801.713.2313
www.teraflex.com

Jeep® and the Jeep® grill are registered trademarks of Fiat Chrysler Automobiles N.V., and have no affiliation with TeraFlex Inc.