



SYNERGY MFG. 870 INDUSTRIAL WAY, SAN LUIS OBISPO, CA (805) 242-0397

PPM-5804 TJ FRONT GRAB HANDLE KIT

Version 1.0

GENERAL NOTES:

- Read installation instructions fully prior to beginning installation.
- Check our website at www.polyperformance.com for updated instructions.
- It is necessary when installing the grab handles to remove the front hard top section or to fold back the front soft top section.
- The grab handle kit is a bolt on installation but you do have to trim some of plastic interior trim and roll cage padding. A dremel type tool or straight air grinder with a small drum sander works well for this.



Complete PPM-5804 TJ Front Grab Handle Kit

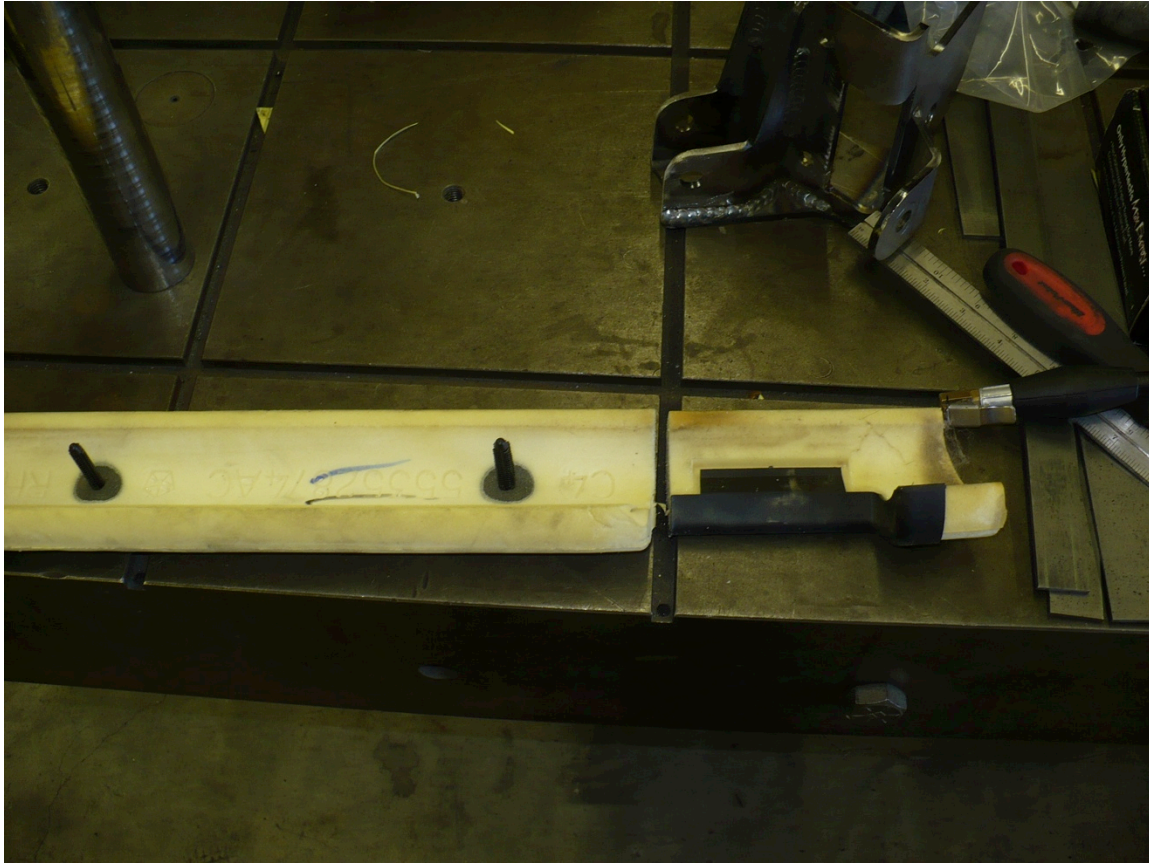
- 1) Remove A-pillar windshield trim if vehicle is equipped with it by first removing the sun visor.
 - a. Next, remove upper side window frames by unscrewing top dial fasteners.
 - b. Remove the outer torx head bolt (T-40) which connects the B-pillar to a-pillar. This is your forward attachment point for the grab handles.
 - c. Unscrew the three Phillips head screws that run down the length of the a-pillar trim.
 - d. Remove the sun visors. There is one screw holding them in.
 - e. Trim should be loose at this time, to fully remove, locate plastic barb fastener at top of trim and pry free. Pull the trim away from the windshield as there is a small clip by the sun visor attachment which holds it in place. (See pictures below)



Plastic barb fastener at top of A-pillar trim



- 2) Unzip the roll-cage wrap on the tubes that connect the B-pillar hoop to the windshield. Remove padding and make one cut at the start of the forward cut-out for the upper window frame. See Picture below.



- 3) Reinstall padding, do not put cover back on just yet though.
- 4) Clearance windshield trim for handles.
 - a. Mark plastic trim using template provided in kit. Template goes on the inside of the trim and follows the outer edge. See pics for reference.
 - b. Carefully cut out marked hole for tab clearance.

c. Remove material until tab fits cleanly through the plastic trim.



Note top of template should line up with rough surface on inside edge of trim





- 5) Reinstall plastic a-pillar trim and loosely bolt in grab handle using the outer windshield bolt removed in step 4.



- 6) Zip up roll bar padding and connect other side of grab handle to roll cage using the 1.75" J-hook provided in the kit. Snug J-hook down, but do not tighten yet.



- 7) Fully zip up padding and tighten forward windshield bolt. Torque to 40 ft-lbs
8) Tighten J-hook bolt. Snug down till handle no longer moves. Do not over tighten and strip out J-hook or button head screw.

- 9) Installation is now complete; reinstall hard / soft top and all other factory parts removed during installation.



Completed install of PPM-5804 TJ Front Grab Handles

Please use cutout template available at
http://www.synergymfg.com/instructions/5804_Cutout_Template.pdf